

Job Name: _____

Location: _____

Purchaser: _____

Engineer: _____

Submitted To: _____

For: Reference Approval Construction

Submitted By: _____

Date: _____

Unit Designation: _____

Cooling Performance:

| | |
|---------------------------|------------------|
| Nominal Capacity | 28,600 Btu/h |
| Nominal Sensible Capacity | 22,400 Btu/h |
| EWT Range | 40-50°F (5-10°C) |
| Nominal Flow Rate | 6.0 GPM |
| Nominal Pressure drop | 4.8 Ft/Hd |

Heating Performance:

| | |
|-----------------------|---------------------|
| Nominal Capacity | 32,300 Btu/h |
| EWT Range | 100-125°F (38-52°C) |
| Nominal Flow Rate | 6.0 GPM |
| Nominal Pressure drop | 4.8 Ft/Hd |

Notes:

- Cooling Capacity is based on 50°F Entering Water Temp and 80°F DB/67°F WB Entering Air Conditions.
- Heating Capacity is based on 110°F Entering Water Temp and 70°F DB Entering Air Conditions.
- Refer to detailed capacity tables for further information pertaining to the entire entering water temperature range and for flow rates and pressure drop.

Airflow Rate:

| | |
|--------------------------------|--|
| Fan Motor Type | PSC |
| Nominal CFM | 1000 CFM |
| Total External Static Pressure | Std: 0.3" WG / Max: 0.5" WG |
| Blower Speed setting | "Med-Hi" Speed Setting |
| Motor rating | 1/3 HP |
| Airflow arrangement | <input type="checkbox"/> Up-flow, <input type="checkbox"/> Horz. Left, <input type="checkbox"/> Horz. Right (Possible) |

Electrical Data:

| | |
|-----------------------------------|-------------------|
| Power supply | 120V / 1PH / 60Hz |
| Min. Circuit Amps (MCA) | 7.5 AMP |
| Max. overcurrent protection (MOP) | 15 AMP |

Physical Data:

| | |
|---|------------------|
| Dimension (H x W x D) | 42"x23"x20" |
| Weight | 170 lbs |
| Insulation type / R-Rating | 1/2" JM TUF-SKIN |
| Installation Clearances: U.L. Listed for installation with Zero inches Clearance to Combustible materials | |

Connection type

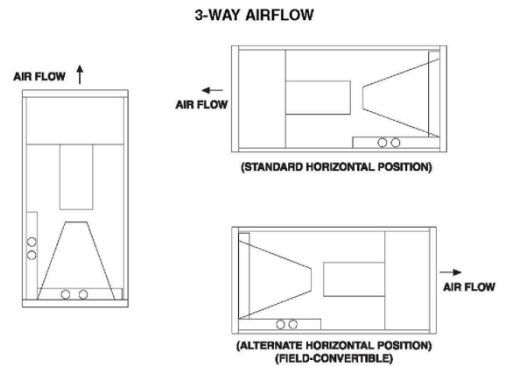
| | |
|----------------------------|---------------|
| Inlet / Outlet Connections | 3/4"(Nominal) |
| Connection Type | Sweat |
| Drain Connections | 3/4"(M) NPT |

Feature:

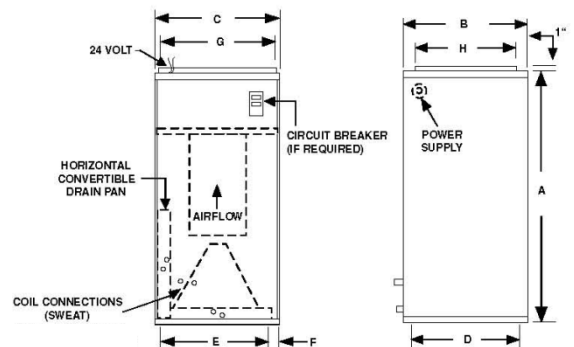
| | |
|-------------------------------|------------|
| Air Filter (MERV 8 Throwaway) | 20"x22"x1" |
|-------------------------------|------------|



Airflow arrangement



Physical Dimensions



| A | B | C | D | E | F | G | H | FILTER SIZE |
|----|----|----|--------|----|---|----|----|-------------|
| 40 | 23 | 20 | 21-1/2 | 16 | 2 | 18 | 17 | 20x22x1 |